

Quick Setup Guide



Important Information

SadoGO

Default Username & Password: **admin & admin**

GUI:

Default IP:

192.168.1.1 (Router Mode)

192.168.1.254 (AP Mode)

192.168.1.254 (WiFi AP Mode)

Default Username & Password: **admin & admin**



www.sapido.com.tw

SAPIDO Technology Inc.

383, Sec. 2, Minsheng Rd., West Central District, Tainan City 700, Taiwan

☎ 886-6-2280698 📠 886-6-2293658 ✉ Sales@sapido.com.tw

To Start:

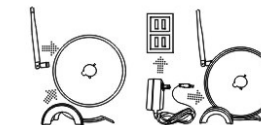
Check the Package Content :

GR-1222 device *1 · Base Holder*1 · Power Adapter*1 · Antenna*1 · Installation CD*1



Install the device:

Assemble GR-1222 device with base holder and antenna. Next, connect AC power adapter with GR-1222 device, then plug in the socket.



Install the program :

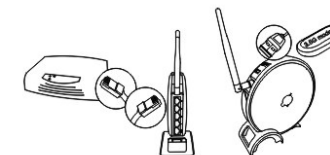
Insert installation CD to run SadoGO installation. When installation is done, SadoGO icon will popup on screen.



【 I . Multiple ISP Internet Sharing 】

Step 1.

Connect xDSL/ Cable(WAN Port) or 3.5G modem(USB Port) to GR-1222. If the WAN interface is wireless, such as wifi modem or hotspot, it's not necessary to connect the WAN port.



Step 2.

Please use Ethernet cable to connect GR-1222(Lan Port) with PC



Step 3.

Execute SadoGO, and select "Function Setup" to configure.



Step 4. The product map will list all SAPIDO products found in LAN, and you can start the application by double clicking the icon of product you would like to use..



Note: In case the product is not found, it might be blocked by firewall of anti-virus software, please disable the firewall temporarily. Or you can log in product via "My Network Places" (the UPnP feature needs to be enable) just click the SAPIDO_GR-1222 to open the login page. Alternatively, you can open browser and type the default IP (192.168.1.1 or 192.168.1.254) to log in product.

Step 5. Fill in username and password of administrator: **admin/admin**, and then click "Login".

User Name:
 Password:

Step 6. Select "Router mode", and then click "Next".



Step 7. Select "One Button Setup", and then click "Next".



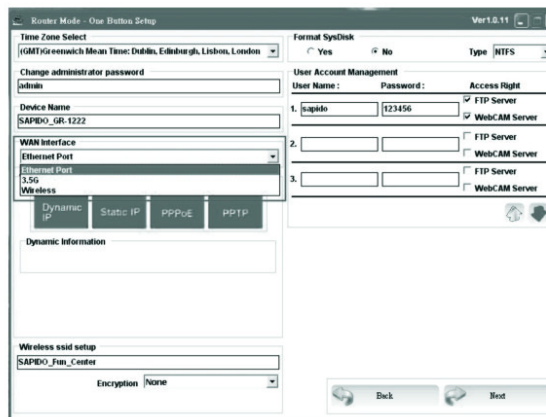
Step 8. Select the mode of "WAN Interface", and fill in the account information.

a. If you connect with xDSL/Cable, you should select "ethernet port" as your WAN interface. Also, you have to fill in username and password which are provided by your ISP server.

b. If you connect with 3.5G/3.75G modem, "3.5G" mode should be selected. Enter the SIM PIN and APN information supplied by your 3.5G ISP, and then click "Next" to finish the configuration.

* If you fail to access 3.5G Internet, please check the 3.5G modem support list.

c. If the internet connection is from wireless, such as wireless modem or hotspot. Please select "wireless" mode, and then fill in username and password.



*Notice: "Format SysDisk" will remove all of the files inside. So, if you want to keep the files, select "No".

【 II. AP Setup 】

1. AP Mode Setup

Step 1. Use Ethernet cable to connect WAN port of GR-1222 and the DHCP Server (Router).

Step 2. Use Ethernet cable to connect LAN port of GR-1222 and the computer. Power on the GR-1222, and you are able to configure when the STATUS/WPS LED is on.

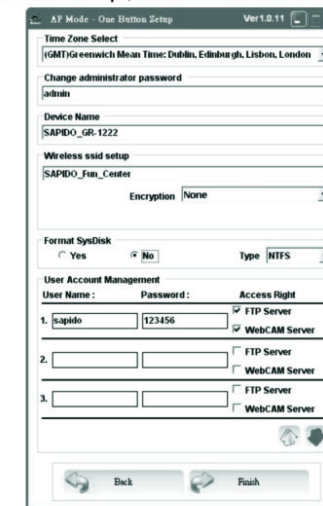
Step 3. Double Clicking the icon of GR-1222, and then enter the username and password: **admin/admin**.



Step 4. Select "AP mode". After completing the setting, you can use internet by AP mode.



Step 5. Select "One Button Setup", and then click "Next".



2. WiFi AP Setup With WPS Button

If the network you would like to connect is a SAPIDO 11N product, you may complete the WiFi AP setup with the WPS button.

Step 1. Press the WPS button on the SAPIDO 11N product that you would like to connect till the STATUS/WPS LED turns to orange.

Step 2. Press the WPS button on the GR-1222 till the STATUS/WPS LED also turns orange. Then the WiFi AP setup is done.