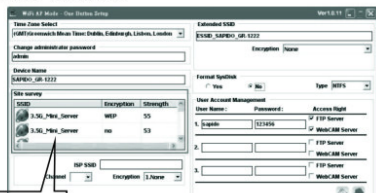


With Program

- Step 1. Use Ethernet cable to connect LAN port of GR-1222 and the computer. Power on the GR-1222 and wait till the STATUS/WPS LED is on.
- Step 2. Execute SadoGO, and select "Function Setup" to configure.
- Step 3. Select "WiFi AP Mode". Router Mode AP Mode WiFi AP Mode
- Step 4. Select "One Button Setup", and then click "Next".
- Step 5. The available networks will be listed on Site survey column, select one you would like to connect. Fill in the encryption information of the network you select to connect, and you may create user accounts.



SSID	Encryption	Strength
3.5G_Mini_Server	WEP	55
3.5G_Mini_Server	no	53

Step 6. Click "Finish" to complete the setup.

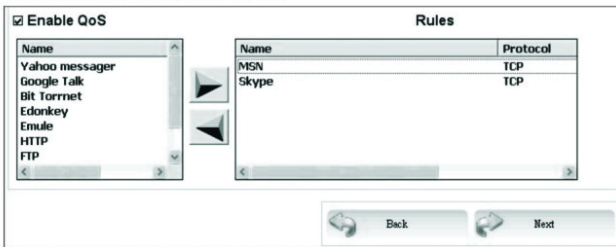
[III. QoS Function]

Under Router mode, users can apply QoS function to enhance the efficiency of internet connection and make sure the smoothness of online traffic.

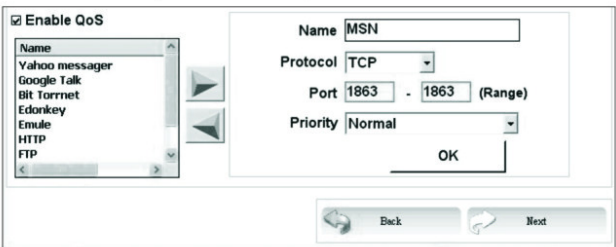
- Step 1. Select "Step setup", and then click "Next".



- Step 2. Follow the setup procedure to the QoS setup. Firstly, enable QoS, then click the item you would like to prioritize and use the right arrow to add it into rules column, otherwise press left arrow to cancel.



- Step 3. If the service item you want to use is not listed on the left names column, you can double click any of those items to make your own setting.
- Step 4. Click "Next" to complete the QoS setup.



[IV. Server Login]

- Step 1. Execute the SadoGO program.
- Step 2. Enter setting page, select "Server Login".

Function Setup

Server Login

- Step 3. The product map will list all SAPIDO products found in LAN, and you can start the server application by double clicking the icon of product you would like to use.

From LAN

- Step 1. Double click the product icon listed on product map that you would like to use.
- Step 2. Fill in username and password of administrator: admin/admin, then click "Login".

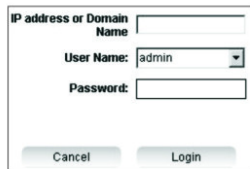


- Step 3. The icon of available servers will be shown below, and click the application you would like to use.



From WAN:

- Step 1. Double click the Internet icon on the product map.
- Step 2. Fill in the WAN IP or DNS/DDNS of GR-1222. The typing should be ip address or DNS or DDNS.
- Step 3. Fill in username and password of administrator or user.



- Step 4. Click "Login". After login, the icon of available servers will be shown below, please click the application you would like to use.

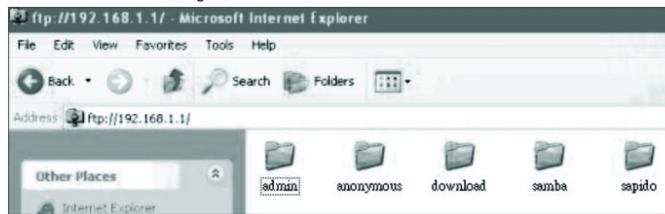
1. Files and Data Center

Login as Administrator:

192.168.1.1 / SAPIDO_GR-1222 / admin



My FTP: Click the icon, and the window (as below) will appear and show all the folders in FTP. "Admin" - It belongs to administrator.



Anonymous - The files that administrator would like to share with others will be in the anonymous folder.

My Samba - All users within same LAN are allowed to view this folder and add, delete, and edit the files.

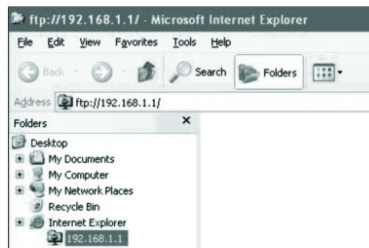
My BT - BT download center, you can browser or search BT files.

Login as user account

The authorized servers will be listed as icons below.



MY FTP: It's a folder of personal user, and files in the folder will appear. The User can manage his/her files. When the administrator creates the user account and authorizes his/her right on FTP, the user folder will be created and named automatically.



2. BT Download

- Step 1. Login as administrator, and select "My BT" to enter BT application.

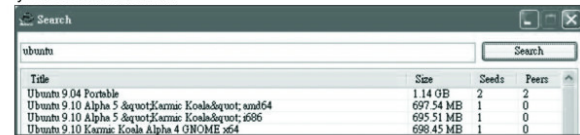
192.168.1.1 / SAPIDO_GR-1222 / admin



- Step 2. Click "Browser" to choose torrent file in the computer. The default rate of upload and download is the maxima, and you may adjust the rate in case of the bandwidth is occupied by BT task.



- Step 3. Users can search BT files via SadoGO. Click "Search" and input key words. The found files will be listed as below, select file and click "Next" to add it to your download task.



- Step 4. User can add 20 torrent files in the column, and download 2 files at the same time. The download task is executed in the files adding order, and you may stop the task during downloading temporarily by clicking the "Stop" button, and prioritize the task by ▲ or ▼.



- Step 5. If user want to check the BT files after downloading, you have to login in as "Administrator". Then click "My FTP" to view the BT files in the "download" folder.