



Internet Express

200Mbps . Plug n Go! . Free from Space Limit

Mini Powerline AV. Ethernet Adapter

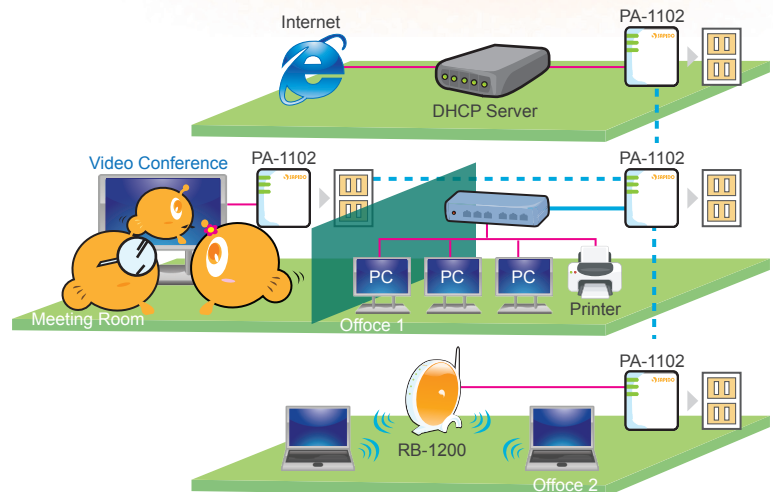
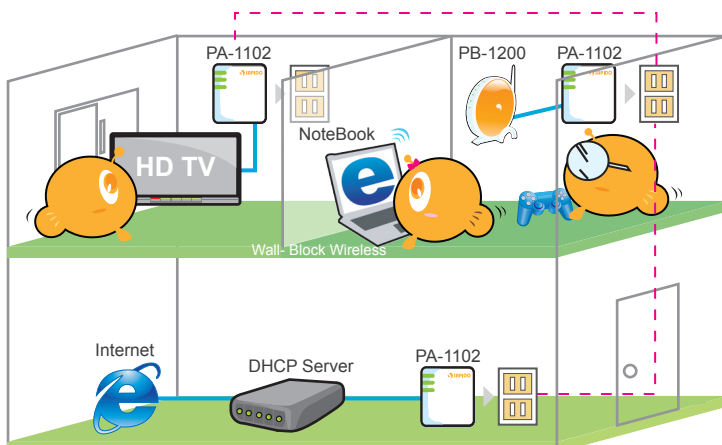
PA-1102

• Instant Internet Connection

– Existing Electrical Outlet – Plug ‘n’ Go

- If you're like most people, you don't have an ethernet jack in your environment.

Rather than running long wires all around your house, or having an expensive technician re-wire your home, you can just purchase a pair of Sapido Powerline AV Ethernet Adapter. Like an extension cord for the Internet, the Sapido Powerline AV Ethernet Adapter uses your home's existing electrical wiring to transmit the ethernet signal from your router. Plug one Sapido Powerline AV Ethernet Adapter into a power outlet near your router, and use more powerline adapters in different rooms for setting up your home network.



• Ultimate Network Security and Coverage

Without the physically plugging into your power grid, your network is undetectable. Moreover, Sapido Powerline AV Ethernet Adapter protects all the data through your power grid by automatically encrypting 128-bit AES link. You can freely install this anywhere within your home.

• Link it up - Simple and Stable

- No need for extra cables, just plug the Powerline into any electrical outlet in your house, the socket becomes an Ethernet jack or network connection point.

Faster speed for multiple applications-Sharing the Internet access, printers, files, video/audio players, online games with Sapido powerline adapters. Ultimate Network Security and Coverage.

● Faster Speeds for Multiple Applications.

- Internet Surfing
- High Definition (HD) and Standard Definition (SD) video distribution
- Higher Data Rate Broadband Sharing
- Audio and Video Streaming
- Files and Application Sharing
- Security Cameras and Video Server
- Network and Online Games like PC game, XBOX 360, PS2, PSP or NDS
- Multiple streams of High-Definition (HD) for connecting to devices like PVRs or Set-top boxes.
- Expanding the coverage of wireless LANs



Internet
Connection



Videos, Audio,
Files sharing
Between multiple PCs



VoIP



High Speed
ADSL 2+



Chatting
Videocference



IP TV

● Why Powerline Communication?

In-home Powerline communications (PLC) technology uses the existing electrical wiring and sockets in a home or small business to connect PCs, broadband modems, set-top boxes, gaming consoles, audio/video players, flat screen displays, security cameras and other electronics devices. In effect, every socket becomes an Ethernet jack or network connection point - without adding any new wires! Consumers can instantly install their own home networks just by plugging their Powerline-enabled equipment into the wall.

- Complement of Wireless

Although the wireless environment provides the freedom of mobile users to access Internet, the current technology still has certain limits, such as the dead zones, interference, range limits. The Powerline can be used to extend the range of wireless networks by adding WiFi access points in areas with dead spots or weak coverage or by allowing a single access point to be placed in the ideal location in the house that will permit whole-house WiFi coverage.

- Substitute to Wireless

Compared to wireless, Powerline technology is much easier to set up and use, and which provides better range and more reliable whole house coverage. In-home Powerline Communication is particularly useful for applications that need real time delivery of streaming audio and video or low-latency connectivity.

- Alternative to New Wiring

Running new wiring to set-up a home network could be expensive and disruptive. With Powerline technology, the existing wiring in the house serves as the network, and turns every electrical outlet into an Ethernet port or other network connection point.

● Specification

- HomePlug AV. compliant
- Operates on existing Home Electric Wiring
- Plug-and-Play (PnP) configurations
- Data transmission rate up to 200Mbps
- Built-in QoS and Error Correction features
- 128-bit AES Link Encryption with key management for secure power-line communications
- 10/100 auto-sensing
- Compliant with IEEE 802.3/802.3u
- Hassle-free communication software suit provided
- World-wide version
- Switchable plug plate with various countries' adapter specification

